



GREENLAM
HPL & COMPACT
COLLECTION



Product Range

When it comes to HPL and Compact, Greenlam® is the name that has always stood out. Be it design, quality, performance or innovation, Greenlam® exceeds the highest expectations with it's offerings, that is designed to perform day after day.

Greenlam's product offerings include, High Pressure Laminates (HPL) and Compact Grade Laminates.

Sizes Available:

Greenlam's HPL collection is available in two sheet sizes, for which stock is available from our distributor and our local warehouse. Sizes include:

- 3050 mm x 1300 mm
- 3660 mm x 1525 mm



Greenlam's Compact Range includes three sizes, which are readily available from our distributor and our local warehouse:

- 3050 mm x 1300 mm
- 3660 mm x 1525 mm
- 3660 mm x 1830 mm

Textures Available

Because we want to keep it simple and easy for you, we offer you 3 textures to choose from. These textures include an eggshell effect named as SUEDE Texture, a uneven rough woody texture known as PURE GRAIN and a last but not the least a highly sophisticated reflective texture with a luminous effect, known as GLOSS.



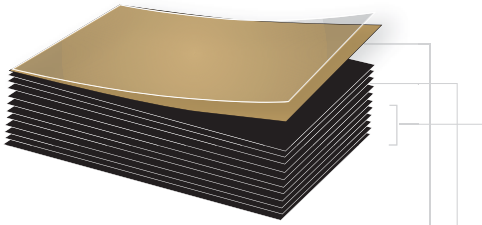
Technical Properties

All Greenlam® HPL & Compact Grade laminates provide excellent technical properties in compliance with EN -438

In addition, all Greenlam HPL & Compact Grade laminates have also excellent Fire Retardant properties. In accordance with BS 476 Part 6 & Part 7, all Greenlam® HPL have a Class 0 Fire Rating and all Greenlam® Compact Laminates have a Class 1 Fire rating, which is considered the best in the industry.

Product	High Pressure Laminate (HPL)	COMPACT Laminate
Size (mm)	3050 x 1300 / 3660 x 1525	3050 x 1300 / 3660 x 1525 / 3660 x 1830
Thickness (mm)	0.7	6 - 10 - 12

HPL (HIGH PRESSURE LAMINATES)



Protective surface (for print decors)
impregnated with melamine resins

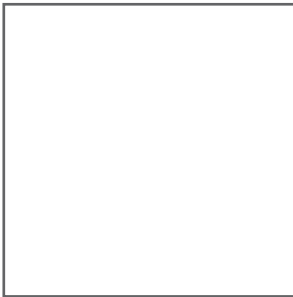
Decorative paper
impregnated with melamine resins

Kraft paper layers
impregnated with phenolic resins

Applications:

Doors
Cubicles
Storage units
Home furniture items
Wall panelling
Worktops
Vanity units
Office partitions
Column Cladding

COMPACT (COMPACT LAMINATE)



Restroom Cubicles
Lockers
Partitions
Worktops
Changing rooms
Schools
Hospitals
Furniture (schools,
laboratories etc.)

Greenlam® COMPACT is made with tissue overlay for printed decors and consists of one decorative solid or print design paper on both sides impregnated with melamine resin. The core of the compact is made with layers of jet black colour kraft paper impregnated with phenolic resin.



Resistant to
Microbial growth



Anti-Bacterial



Scratch resistant



Horizontal / Vertical
application



Greater
dimensional stability



Low emissions



Wet heat tested



Abrasion resistant



Dry heat tested



Fire resistant available



Resistant to harmful
chemicals & solvents



Exceptional
self-supporting feature

Product Availability



Solid Colours

Solid Colours

					Product	HPL		COMPACT				
						Antibacterial Postforming	Antibacterial					
					Grade		3050 x 1300	3660 x 1525	3050 x 1300	3660 x 1525	3660 x 1830	
							Size mm					
Thickness mm					0.7		6	12	10	12		
CODE	NAME	NCS*	RAL*	LRV	TEXTURE							
101	White	S 0603-R80B	9003	82.8	S-G	S						
107	Wool	S 063-G40Y	9016		S-G							
111	Designer White	S 1002-R	9003			S			S	S		
113	Frosty White	S 0502-G50Y	9010	84.2	S-G	S	S		S	S		
115	Alabaster	S 0804-Y30R	9001		S							
116	Pearly White	S 0500 - N	9016			S				S		
121	Ivory	S 1010-Y20R	0859010	69		S				S		
124	Mysore Ivory	S 0502-Y	1013	82	S	S			S	S		
132	Cyclone	S 2502-Y50R	7044	53	S-G							
133	Moon Stone	S 1505-Y40R	9002	61.5	S				S	S		
134	Mud Ash	S 4010-Y30R	1019	31	S	S				S		
141	Beige	S 2010-Y50R	7032	51.9	S	S			S	S		
149	Sheer	S 2005-Y60R	7044	54		S				S		
161	Hot Pink								S	S		
163	Bay		7032	39.7		S			S	S		
166	Blush Pink	S 2020-Y80R		41.2		S			S	S		
173	Barbie Pink	S 1060-R20B	4003	25.4	S	S			S	S		
181	Chocolate	S 7010-Y70R	8028	10	S							
201	Maroon	S 5040-R	3009	8	S-G					S		
204	Red Dynasty	S 2070-Y80R	3018	16.2	S-G	S			S	S		
207	Divine Yellow	S 1070-Y40R	1004	51	S-G					S		
212	Viola	6010-R30B	3403010	11.9		S			S	S		
215	Tangerine	S 0585-Y70R	2004	25.6		S			S	S		
217	Light Orange	S 0560-Y40R	1034	43.8	S-G	S			S	S		
229	Yellow	S 1050-G90Y	1012		S				S	S		
230	Cream Yellow	S 0520-Y20R	1014	69.7		S			S	S		
231	Lime Yellow	S 0570-G80Y	1016	69.5		S			S	S		
247	Dutch Green	S 1020-G30Y	6019	68	S				S	S		
251	Bright Green								S	S		
257	Olive		1000	65.1		S			S	S		
259	Lime	S 2060-G40Y	6018	38.1	S-G	S			S	S		
261	Dark Grey	S 6502-B	7012	13.8	S	S	S		S	S		
262	Grey	S1502-B	7035	55	S							
264	Bronze	S 5005-Y50R	7023			S				S		
266	Ash Grey	S 5000-N	7037	26	S							
268	Dust	S 3500-N	7004	37.3		S			S	S		
270	Silver Grey	S 2002-B50G	7047	55	S		S					
271	Light Grey	S 1502-R50B		62.7		S			S	S		
274	Pine Nut	S 6005-Y20R	7006		S							
275	Pearl Grey	S 1502-Y	7038	56.9	S	S			S	S		
279	Cher Grey	S 7500-N	7043			S				S		
280	Blue	S 2565-R80 B	5005	17	S							
281	Navy Blue					S						
284	Ozone	S 1030-R80 B	5024	51.7		S			S	S		
289	Beryl	S3010-R80 B	7040	39.1		S			S	S		
290	Dusty Jade	S2020-B50 G	6034	40.8		S			S	S		
291	Electric Blue	S 3060-R80 B	5005	12.6	S-G	S			S	S		
297	Blue Galaxy	S6020-R90 B	5000	12.2		S			S	S		
401	Black	S 9000-N	9005	5.6	S-G	S-G	S		S	S		
464	Peacock	S3050-B40G	1905040	25		S			S	S		
948	Black Sea Pearl	S 4050-Y20R		32	G							

Woodgrains

Product

Grade

Size mm

Thickness mm

HPL

Antibacterial Postforming

3050 x 1300

3660 x 1525

3050 x 1300

3660 x 1525

3660 x 1830

0.7

6

12

10

12

COMPACT

Antibacterial

Woodgrains

CODE	NAME	TEXTURE							
682	Hiland Pine	S							
695	Bavarian Beech	S							
711	Siam Teak	S							
719	Mangfall Beech	S				S			
728	European White Elm	S							
738	Oak	S-PG	S					S	S
749	Sapele	S							
766	Rich Walnut	S-PG							
770	Douglas Fir	S							
791	Milwakee Walnut	S							
793	Antique Oak	S							
5003	Phillipine Teak	S	S					S	S
5004	Lorraine Walnut	S-PG							
5006	Thansau Maple	S	S					S	S
5007	White Larch	S							
5009	Larch Wood	S							
5018	Brooks Walnut	S-PG	S					S	S
5026	Sulphur Spring	S							
5049	Red Oak	S-PG							
5050	Umber Oak	S-PG							
5055	Cafe Prune	S							
5056	Voguish Prune	S							
5061	Fine Wenge	S-PG	S					S	S
5302	Pure Eucalyptus	G							
5303	Scorched Eucalyptus	G							
5525	Hickory Oak	S	S					S	S
5526	Ironside Oak	S							

Patterns

923	Meta Silver	G	S					S	S
929	Metaline Grey	G	S					S	S
5771	Almond Pearl	S						S	S
5772	Nebula	S						S	S
5787	Stipple Seal	S							
5853	Alu Taint	S							
5963	Grey Canvas	S						S	

Liners are also available in 2440 x 1220 x 0.6mm, 3050 x 1300 x 0.6mm and 3685 x 1550 x 0.6mm.

Suede (S)

A hard exterior with a very slight sheen.

Gloss (G)

Evokes shine and a smooth surface.

Pure Grain (PG)

Offers the effect of a natural timber with a soft and natural feel.



www.greenlam.com

For **FREE SAMPLES** please contact our sales office on (+44) 01384 429697 or email info.eur@greenlam.com

Our Commitment To Quality Assurance

Introducing Anti-Bacterial Shield protection for the entire Greenlam range that provides all of your interior design projects with increased protection against germs. The Anti-bacterial property of these COMPACT and HPL Laminates play a vital role in protecting your personal space from all harmful microbes and bacterial agents. Use of these laminates retards the growth of bacteria.

The Greenlam Anti-Bacterial Laminate surface is produced by permanently incorporating a US-EPA approved, well-known and widely used anti-microbial agent.

Our laminates have been tested to provide resistance towards the following micro-organisms:

- Staphylococcus aureus (ATCC 6538P)
- Escherichia coli (ATCC 8739)
- Haemophilus influenza (ATCC 10211)
- Staphylococcus epidermidis (ATCC 12228)
- Klebsiella pneumoniae (ATCC 4352)
- Salmonella typhimurium (ATCC 14028)
- Staphylococcus aureus subsp. aureus (ATCC 6538)
- Methicillin-resistant Staphylococcus aureus (NCTC 12493)
- Enterococcus faecalis (ATCC 29212)
- Streptococcus pneumoniae (ATCC 10015)
- Candida albicans (ATCC 10231)
- Bacillus subtilis (ATCC 6633)
- Pseudomonas aeruginosa (ATCC 15442)

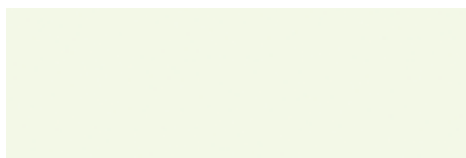


LabGuardian™

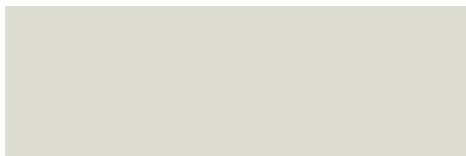
Greenlam Chemical Resistant COMPACT Laminates are designed specifically to shield surfaces from chemical abuse. Ideal for horizontal applications, they are a durable and cost effective substitute to epoxy, slate and stainless steel. Manufactured with a unique patented electron beam curing (EBC) acrylic resin; resistant to harsh chemicals, bases and solvents, as well as harsh cleaning agents and to bacterial growth.

These laminates are available in 3 décors in 3660 mm x 1525 mm x 18 mm

Inhibits the growth of nearly 90 % of common form of bacteria on the decorative surface



9801 - Argent White



9802 - Cinereal



9803 - Black



GREENGUARD Certification Program

Greenlam® laminates are classified under the Low Emitting Product category by the GREENGUARD standards, meaning that harmful pollutants in the air are suppressed to the lowest levels. This is an assurance that our products are designed for use in office environment and other indoor spaces, and promote a healthier environment in these areas.

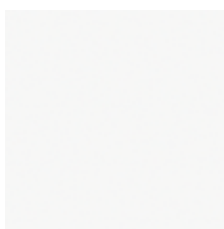


GREENGUARD Gold Certification

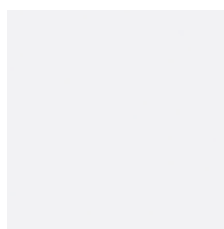
This certification, with a stricter criteria, means that GREENLAM® products are suitable for use in environments where children spend significant periods of time, including schools, daycares and healthcare facilities.

For more information on the GREENGUARD certifications, visit www.greenguard.org

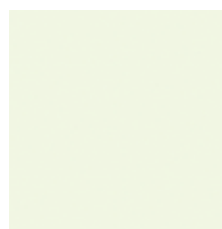
Solid Colours



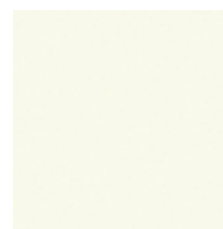
111
Designer White *Suede* HPL
SGL



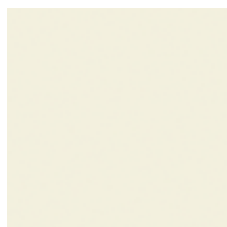
101
White *Suede* HPL
SGL



116
Pearly White *Suede* HPL
SGL



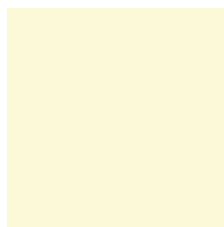
107
Wool *Gloss* HPL



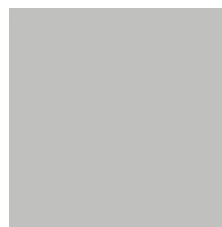
113
Frosty White *Suede* HPL
SGL



115
Alabaster *Suede* HPL



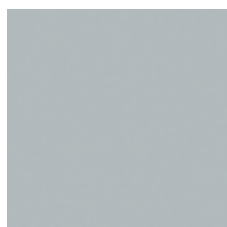
124
Mysore Ivory *Suede* HPL
SGL



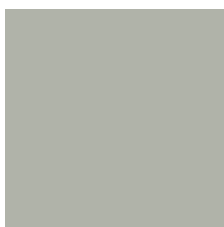
271
Light Grey *Suede* HPL
SGL



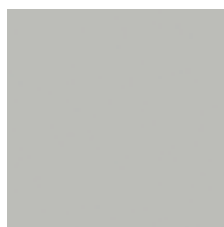
270
Silver Grey *Suede* HPL
SGL



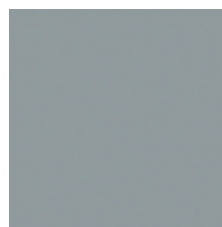
262
Grey *Suede* HPL



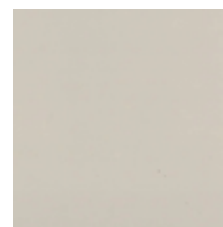
132
Cyclone *Suede* HPL



275
Pearl Grey *Suede* HPL
SGL



268
Dust *Suede* HPL
SGL



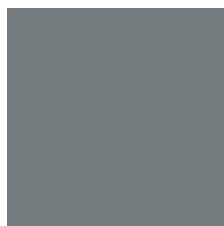
149
Sheer *Suede* HPL
SGL



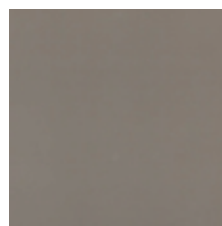
274
Pine Nut *Suede* HPL



948
Black Sea Pearl *Gloss* HPL



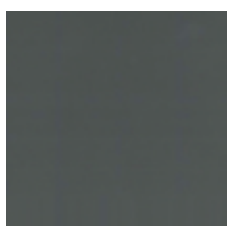
266
Ash Grey *Suede* HPL



264
Bronze *Suede* HPL
SGL



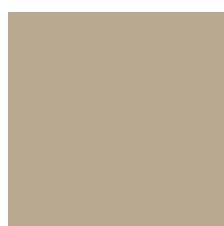
261
Dark Grey *Suede* HPL
SGL



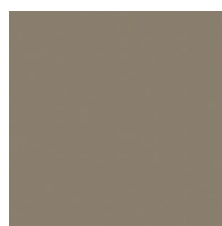
279
Cher Grey *Suede* HPL
SGL



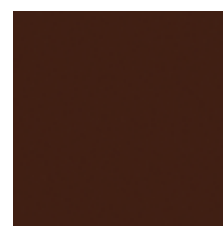
133
Moon Stone *Suede* HPL
SGL



163
Bay *Suede* HPL
SGL



134
Mud Ash *Suede* HPL
SGL



181
Chocolate *Suede* HPL

Solid Colours



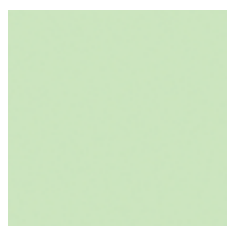
121 Ivory Suede HPL SGL



230 Cream Yellow Suede HPL SGL



257 Olive Suede HPL SGL



247 Dutch Green Suede HPL SGL



251 Bright Green New Suede SGL



259 Lime Suede HPL SGL



231 Lime Yellow Suede HPL SGL



229 Yellow Suede HPL SGL



207 Divine Yellow Suede HPL SGL



217 Light Orange Suede HPL SGL



215 Tangerine Suede HPL SGL



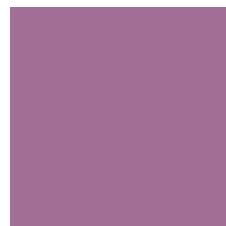
141 Beige Suede HPL SGL



166 Blush Pink Suede HPL SGL



173 Barbie Pink Suede HPL SGL



161 Hot Pink New Suede SGL



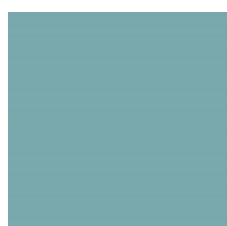
204 Red Dynasty Suede HPL SGL



201 Maroon Suede HPL SGL



464 Peacock Suede HPL SGL



290 Dusty Jade Suede HPL SGL



284 Ozone Suede HPL SGL



289 Beryl Suede HPL SGL



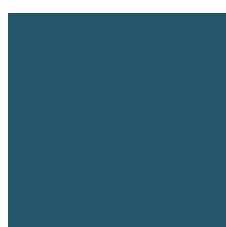
212 Viola Suede HPL SGL



280 Blue Suede HPL



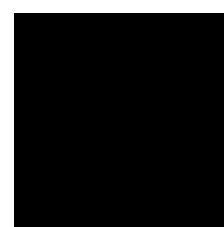
291 Electric Blue Suede HPL SGL



297 Blue Galaxy Suede HPL SGL



281 Navy Blue New Suede SGL



401 Black Gloss HPL SGL

Woodgrains



5007 - White Larch *Suede* HPL



5026 - Sulphur Spring *Suede* HPL



682 - Hiland Pine *Suede* HPL - SGL



770 - Douglas Fir *Suede* HPL - SGL



5006 - Thansau Maple *Suede* HPL - SGL



719 - Mangfall Beech *Suede* HPL - SGL



728 - European White Elm *Suede* HPL



5049 - Red Oak *Pure Grain* HPL



738 - Oak *Pure Grain* HPL - SGL



5003 - Phillipine Teak *Suede* HPL - SGL



5525 - Hickory Oak *Suede* HPL - SGL



695 - Bavarian Beech *Suede* HPL



711 - Siam Teak *Suede* HPL - SGL



5004 - Lorraine Walnut *Pure Grain* HPL



5055 - Cafe Prune *Suede* HPL



749 - Sapele *Suede* HPL - SGL

Woodgrains



5061 - Fine Wenge *Pure Grain* HPL - SGL



5526 - Ironside Oak *Suede* HPL



5050 - Umber Oak *Pure Grain* HPL



5056 - Voguish Prune *Suede* HPL



5018 - Brooks Walnut *Pure Grain* HPL - SGL



791 - Milwaukee Walnut *Suede* HPL



793 - Antique Oak *Suede* HPL



5009 - Larch Wood *Suede* HPL



766 - Rich Walnut *Pure Grain* HPL

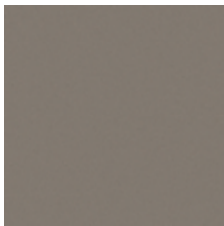


5302 - Pure Eucalyptus *Gloss* HPL



5303 - Scorched Eucalyptus *Gloss* HPL

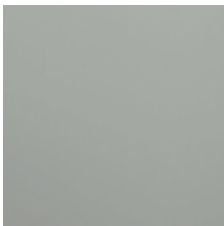
Patterns



5787
Stipple Seal *Suede* HPL
SGL



923
Meta Silver *Suede* HPL
SGL



929
Metaline Grey *Suede* HPL
SGL



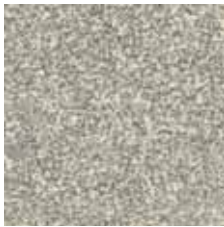
5853
Alu Taint *Suede* HPL
SGL



5771
Almond Pearl *Suede* HPL
SGL



5772
Nebula *Suede* HPL
SGL



5963
Grey Canvas *Suede* HPL
SGL

HPL & COMPACT COLLECTION

For product information, technical advice or
free samples request contact us at:

T: (+44) 01384 429697

E: info.eur@greenlam.com

Uniclass	L664
CI/SfB	Rn8

10.2014



For more on
responsible forestry

Greenlam Europe (UK) LTD

Unit 5 & 6, Pear Tree Industrial Estate
Crackley Way, Dudley DY2 0UW
United Kingdom

Tel: (+44) 01384 429697

Fax: (+44) 01384 429698

Email: info.eur@greenlam.com

www.greenlam.com

